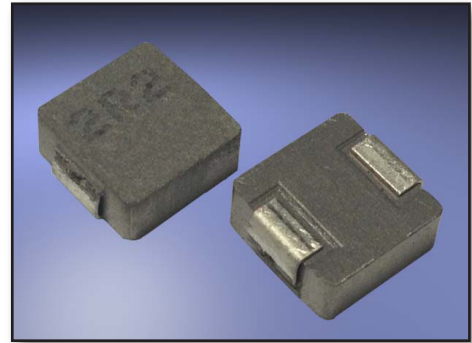


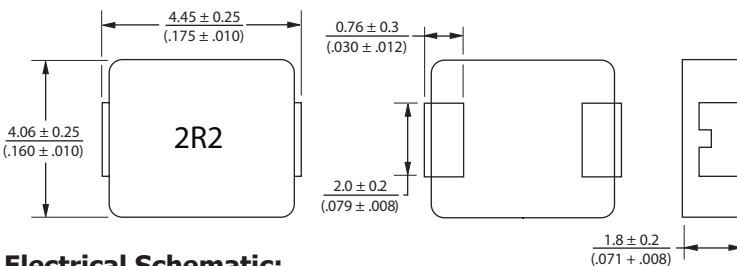
Features :

- SMD Shielded High Current Power Inductor (for Automotive Applications)
- Shielded Construction
- Carbony; Powder Core
- High Saturation Current
- Operating Temperature: -40°C to +150°C (temperature rise included)
- Storage Temperature: -40°C to +125°C
- Resistance to Soldering Heat: +260°C, 40 sec. mac.
- Rated Current: Inductance drops 20% at Isat
- Temperature Rise: 40°C at rated Irms
- Testing Inductance and Q are tested on an HP4284A at specified frequency.
- Test Frequency: 100KHz
- Test Voltage: 1.0V
- Moisture Sensitivity Level: 1
- Additional info available upon request.

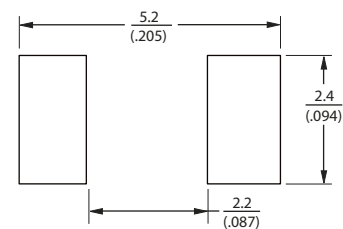


Part Number	Inductance @100KHz / 1V		Q (Min.) @100KHz / 1V	SRF (MHz) Typ.	DCR (mOhms) Typ.	DCR (mOhms) Max	Irms (A)	Isat (A)
	L (μH)	Tol (%)						
AXHCSPA4018-R10Y	0.10	±30	5	300	3.2	4.0	12	35
AXHCSPA4018-R22Y	0.22	±30	10	270	6.6	7.3	11	24
AXHCSPA4018-R33M	0.33	±20	10	130	7.8	8.6	10	18
AXHCSPA4018-R47M	0.47	±20	10	120	11.2	14	8.0	12
AXHCSPA4018-R56M	0.56	±20	10	105	13.5	16	7.3	10
AXHCSPA4018-R68M	0.68	±20	10	100	16.0	19	7.0	10
AXHCSPA4018-1R0M	1.0	±20	10	65	22.0	27	5.0	8.5
AXHCSPA4018-1R2M	1.2	±20	10	64	25.0	30	4.8	7.8
AXHCSPA4018-1R5M	1.5	±20	10	62	34.8	42	4.5	7.0
AXHCSPA4018-2R2M	2.2	±20	10	45	51.0	61	4.0	6.0
AXHCSPA4018-3R3M	3.3	±20	10	40	69.0	76	3.5	4.0
AXHCSPA4018-4R7M	4.7	±20	10	27	95.0	105	2.6	3.5
AXHCSPA4018-5R6M	5.6	±20	10	25	112	125	2.2	3.0
AXHCSPA4018-6R2M	6.8	±20	10	24	150	172	2.1	2.8
AXHCSPA4018-8R2M	8.2	±20	10	21	158	180	2.0	2.5
AXHCSPA4018-100M	10.0	±20	10	19	215	243	1.8	2.3
AXHCSPA4018-150M	15.0	±20	10	17	325	374	1.5	1.9
AXHCSPA4018-220M	22.0	±20	10	12	470	500	1.2	1.4

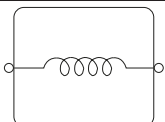
Dimensions [Units: mm(inches)]:



Pad Layout [Units: mm(inches)]:



Electrical Schematic:



Specifications are subject to change without notice.
Customers should verify actual device performance in their specific applications.