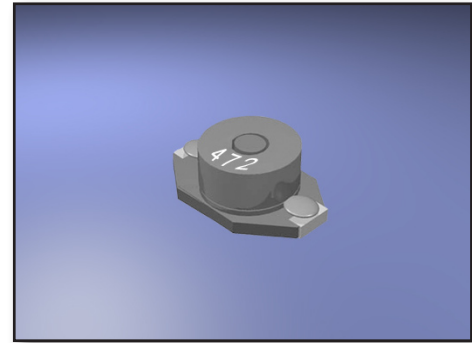


**Features :**

- Description: SMD shielded power inductor
- Applications: Ideal for high performance DC/DC converter applications, computers, LCD displays and telecommunication equipment. Especially those requiring shielding.
- Operating Temperature: -40°C to +85°C
- Inductance Tolerance: ±20%
- Testing: Inductance is tested on an HP4284A at 100 kHz
- Packaging: Tape & reel, 1000pcs / 13" (330mm) reels.
- Marking: Suffix Code
- Miscellaneous: Magnetically shielded
- Additional info available upon request.



Part Number	Inductance (µH±20%)	DCR Max (Ohms)	SRF Typ. (MHz)	Inductance Rating (µH)	L Test Freq. (KHz)	Current Rating (A)	Max Energy Storage (µJoules)	Max. Switch Freq.
AXDSS1555-102	1.0	0.025	60	.50	100	4.0	9.0	1 MHz
AXDSS1555-152	1.5	0.030	55	.70	100	4.0	12	1 MHz
AXDSS1555-222	2.2	0.035	55	1.0	100	4.0	15	1 MHz
AXDSS1555-332	3.3	0.040	50	1.5	100	4.0	16	1 MHz
AXDSS1555-472	4.7	0.045	45	2.0	100	3.0	10	1 MHz
AXDSS1555-682	6.8	0.050	40	4.0	100	2.5	14	1 MHz
AXDSS1555-103	10	0.055	35	5.0	100	2.0	11	1 MHz
AXDSS1555-153	15	0.060	25	6.0	100	1.8	12	1 MHz
AXDSS1555-223	22	0.084	22	10	100	1.5	11	1 MHz
AXDSS1555-333	33	0.090	18	12	100	1.3	13	1 MHz
AXDSS1555-473	47	0.110	16	27	100	1.0	13	1 MHz
AXDSS1555-683	68	0.150	12	40	100	0.90	17	1 MHz
AXDSS1555-104	100	0.290	9.0	50	100	0.80	15	1 MHz
AXDSS1555-154	150	0.360	8.0	80	100	0.60	15	500 KHz
AXDSS1555-224	220	0.390	6.0	90	100	0.50	10	500 KHz
AXDSS1555-334	330	0.730	5.0	150	100	0.40	13	500 KHz
AXDSS1555-474	470	0.880	4.0	200	100	0.35	13	500 KHz
AXDSS1555-684	680	1.15	3.0	300	100	0.30	13	500 KHz
AXDSS1555-105	1000	1.45	2.5	420	100	0.25	13	500 KHz

**Dimensions :**
