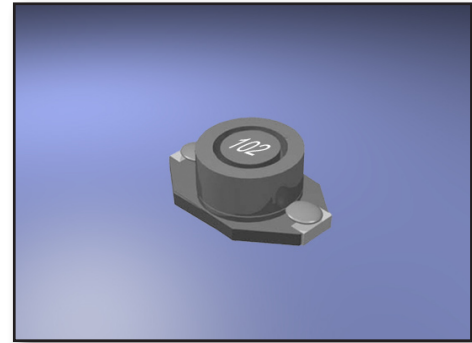
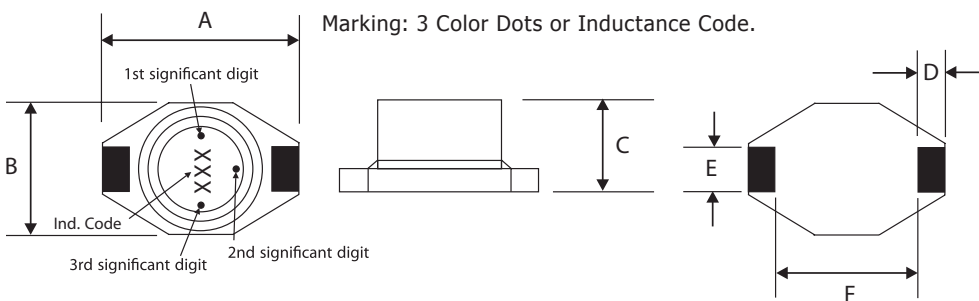


**Features :**

- Description: SMD (shielded) power inductor
- Application: Ideal for high performance DC/DC converter applications, computers, LCD displays and telecommunication equipment. Especially those requiring shielding.
- Operating Temperature: -40°C to +85°C
- Isat: DC current at which the inductance drops 10% (typ.) from its value without current.
- Irms: Average current for 40°C temperature rise from 25°C ambient.
- Inductance Tolerance: ±20%
- Testing: Inductance is tested on an HP4284A at 100 kHz, 0.1Vrms
- Packaging: Tape & reel, 1000pcs / 13" (330mm) reels.
- Marking: 3 Color Dots or Inductance Code.
- Additional info available upon request.



Part Number	Inductance (µH)	L Test Freq. (KHz).	DCR Max. (Ohms)	SRF typ. (MHz)	Irms (A)	Isat (A)
AXDS3316P-102	1.0	100	0.021	140	5.0	5.6
AXDS3316P-152	1.5	100	0.022	120	4.5	5.2
AXDS3316P-222	2.2	100	0.032	80	3.8	5.0
AXDS3316P-332	3.3	100	0.039	70	3.3	3.9
AXDS3316P-472	4.7	100	0.054	40	2.7	3.2
AXDS3316P-682	6.8	100	0.075	38	2.2	2.8
AXDS3316P-822	8.2	100	0.085	36	2.1	2.6
AXDS3316P-103	10	100	0.101	35	2.0	2.4
AXDS3316P-153	15	100	0.150	25	1.5	2.0
AXDS3316P-223	22	100	0.207	19	1.3	1.6
AXDS3316P-333	33	100	0.334	15	1.1	1.4
AXDS3316P-473	47	100	0.472	13	0.80	1.0
AXDS3316P-683	68	100	0.660	10	0.70	0.9
AXDS3316P-104	100	100	1.11	7	0.60	0.8
AXDS3316P-154	150	100	1.55	6	0.50	0.6
AXDS3316P-224	220	100	2.00	5	0.37	0.5
AXDS3316P-105	1000	100	8.30	2	0.17	0.32

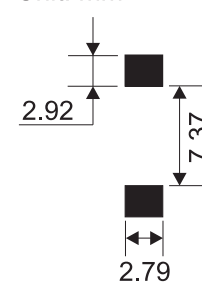
**Dimensions :**


Color Marking: Yellow / Violet / Orange  
 $\frac{1st}{4} / \frac{2nd}{7} / \frac{3rd}{3} = 47000nH = 47\mu H$   
 Dot 1 and 2 indicate inductance in "nano Henries". Dot 3 indicates the number of zeroes to be added.

Size	A Max	B Max	C Max.	D	E	F
mm	12.95	9.4	5.08	2.54	2.54	7.62
inches	0.51	0.37	0.2	0.1	0.1	0.3

**Recommended Land Pattern :**

Unit: mm



Color	Code
Black	0
Brown	1
Red	2
Orange	3
Yellow	4
Green	5
Blue	6
Violet	7
Gray	8
White	9