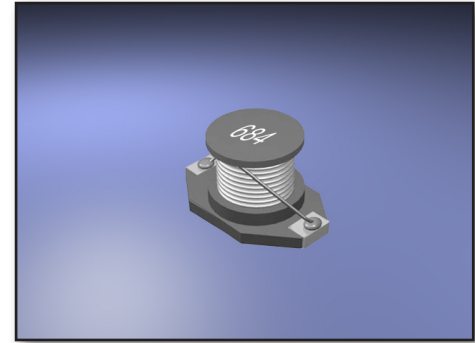


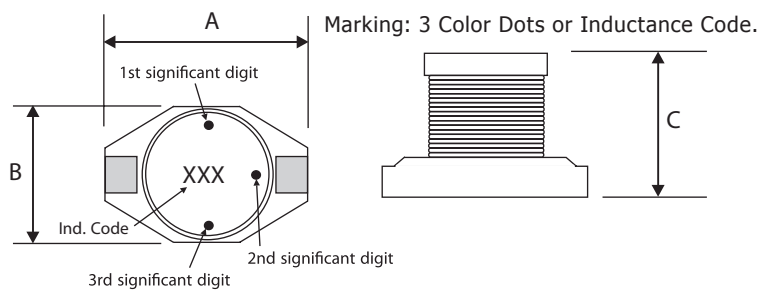
Features :

- Description: SMD power inductor
- Applications: DC/DC converters, computers, LCD displays, telecommuniacion equipment and PDA palm tops.
- Operating Temperature: -40°C to +85°C
- Inductance Tolerance: ±20%
- Inductance Drop: 10% typically at Isat
- Testing: Inductance is tested on an HP4284A at 100 kHz
- Packaging: Tape & reel, 225pcs / 13" (330mm) reels.
- Marking: 3 Color Dots or Inductance Code.
- DC Current at which the inductance drops 10%(Typ.) from it's value without current.
- Electrical specifications at 25°C.
- Additional info available upon request.



Part Number	Inductance (μH)	L Test Freq. (KHz)	DCR Max (Ohms)	SRF Ref (MHz)	Isat Typ. (A)	Irms (A)
AXDO3340P-103	10	100	0.040	22	8.0	3.5
AXDO3340P-153	15	100	0.050	18	7.0	3.0
AXDO3340P-223	22	100	0.066	11	5.5	2.5
AXDO3340P-333	33	100	0.080	9.0	4.0	2.0
AXDO3340P-473	47	100	0.110	8.0	3.8	1.6
AXDO3340P-683	68	100	0.17	7.0	3.0	1.2
AXDO3340P-104	100	100	0.22	5.0	2.5	1.2
AXDO3340P-154	150	100	0.34	4.0	2.0	0.90
AXDO3340P-224	220	100	0.44	3.5	1.6	0.70
AXDO3340P-334	330	100	0.70	2.5	1.2	0.60
AXDO3340P-474	470	100	0.95	2.0	1.0	0.30
AXDO3340P-684	680	100	1.2	2.0	1.0	0.20
AXDO3340P-105	1000	100	2.0	1.5	0.80	0.10

Dimensions :



Color Marking: Yellow / Violet / Orange
 1st / 2nd / 3rd
 4 / 7 / 3 = 47000nH = 47μH

Dot 1 and 2 indicate inductance in "nano Henries".
 Dot 3 indicates the number of zeroes to be added.

Size	A Max	B Max	C Max.	D	E	F
mm	12.95	9.4	11.43	2.54	2.54	7.62
inches	0.51	0.37	0.45	0.1	0.1	0.3

Recommended Land Pattern :

