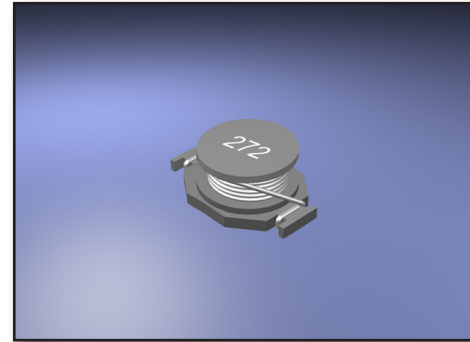


Features :

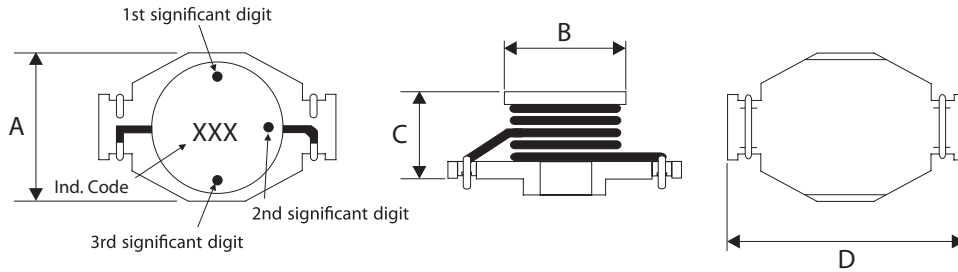
- Description: SMD (high current) power inductor
- Applications: DC/DC converters, computers, LCD displays, telecommunication equipment and PDA palm tops.
- Operating Temperature: -40°C to +85°C
- Isat: DC current at which the inductance drops 10% (typ.) from it's value without current.
- Irms: Average current for 40°C temperature rise from 25°C ambient.
- Inductance Tolerance: ±20%
- Testing: Inductance is tested on an HP4284A at 100 kHz
- Packaging: Tape & reel, 750pcs / 13" (330mm) reels.
- Marking: 3 Color Dots or Inductance Code.
- Additional info available upon request.



Part Number	Inductance (µH)	L Test Freq. (KHz)	SRF Min. (MHz)	DCR Max (Ohms)	Isat Typ. (A)	Irms (A)
AXDO3316P-121HC	0.12	100	200	0.0015	28	17
AXDO3316P-331HC	0.33	100	200	0.002	20	16
AXDO3316P-681HC	0.68	100	200	0.005	13	12
AXDO3316P-102HC	1.0	100	100	0.006	11	10
AXDO3316P-152HC	1.5	100	90	0.008	9.0	9.00
AXDO3316P-222HC	2.2	100	80	0.011	7.8	7.40
AXDO3316P-272HC	2.7	100	65	0.012	7.0	6.60
AXDO3316P-332HC	3.3	100	60	0.014	6.4	5.90
AXDO3316P-392HC	3.9	100	50	0.015	5.9	5.30
AXDO3316P-472HC	4.7	100	45	0.018	5.4	4.80
AXDO3316P-562HC	5.6	100	45	0.021	4.7	4.65
AXDO3316P-682HC	6.8	100	43	0.024	3.6	5.00
AXDO3316P-822HC	8.2	100	34	0.032	4.0	4.15
AXDO3316P-103HC	10	100	31	0.034	3.3	4.30
AXDO3316P-123HC	12	100	27	0.036	3.3	3.80
AXDO3316P-153HC	15	100	25	0.045	2.4	3.50
AXDO3316P-183HC	18	100	22	0.050	2.8	3.00
AXDO3316P-223HC	22	100	18	0.070	2.0	2.80
AXDO3316P-273HC	27	100	18	0.085	2.3	2.60
AXDO3316P-333HC	33	100	17	0.100	1.7	2.10
AXDO3316P-393HC	39	100	15	0.120	1.8	2.00
AXDO3316P-473HC	47	100	14	0.150	1.40	1.70
AXDO3316P-563HC	56	100	12	0.165	1.45	1.60
AXDO3316P-683HC	68	100	11	0.220	1.20	1.50
AXDO3316P-823HC	82	100	10	0.250	1.30	1.60
AXDO3316P-104HC	100	100	9	0.280	0.95	1.20
AXDO3316P-124HC	120	100	8	0.400	1.00	1.00
AXDO3316P-154HC	150	100	6	0.460	0.90	0.90
AXDO3316P-184HC	180	100	6	0.520	0.85	0.85
AXDO3316P-224HC	220	100	5	0.700	0.80	0.80
AXDO3316P-274HC	270	100	5	0.800	0.75	0.75
AXDO3316P-334HC	330	100	4.5	1.070	0.60	0.60
AXDO3316P-394HC	390	100	4.0	1.140	0.62	0.62
AXDO3316P-474HC	470	100	3.5	1.270	0.50	0.50

Dimensions :

Marking: 3 Color Dots or Inductance Code.

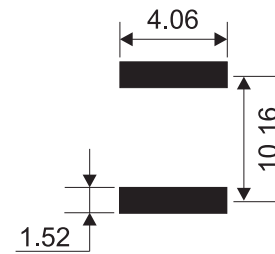


Color Marking: Yellow / Violet / Orange
 1st / 2nd / 3rd
 4 / 7 / 3 = 47000nH = 47µH

Dot 1 and 2 indicate inductance in "nano Henries".
 Dot 3 indicates the number of zeroes to be added.

Recommended Land Pattern :

Unit: mm



Color	Code
Black	0
Brown	1
Red	2
Orange	3
Yellow	4
Green	5
Blue	6
Violet	7
Gray	8
White	9

Size	A Max	B Max	C Max.	D Max.
mm	9.91	8.38	6.35	13.21
inches	0.39	0.33	0.25	0.52