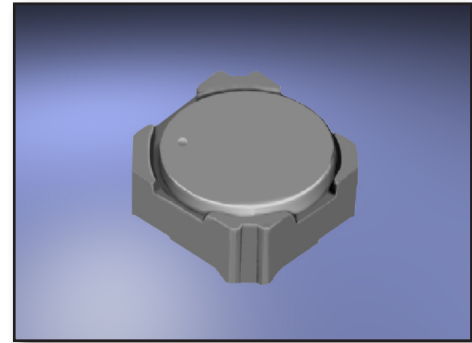
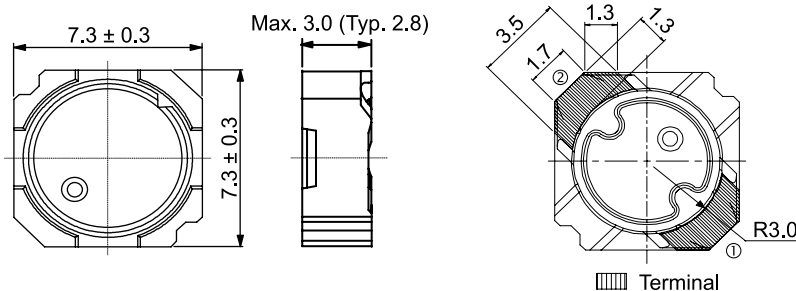


Features :

- Description: SMD (shielded) power inductor.
- Applications: Ideally used in LCD driver, DSC / DVC, Notebook PC or other portable equipment.
- Operating Temperature: -40°C to +105°C
(Including coil's self temperature rise)
- Storage Temperature: -40°C to 105°C
- Solder Reflow Temperature: 260°C peak.
- Inductance Tolerance: NC = ±25%
- Testing: Inductance is tested on an HP4284A at 100 KHz.
- Saturation Current: The value of D.C. current when the inductance decreases to 65% of it's nominal value.
- Temperature Rise Current: The value of D.C. current when the temperature rise is $\Delta T=40^{\circ}\text{C}$ ($T_a=20^{\circ}\text{C}$)
- Packaging: Tape & reel (1000pcs / 13" reel).
- Marking: Parts are marked with inductance code.
- Additional info available upon request.



Part Number	Inductance (μH) $\mu\text{H} \pm 25\%$	@ L Test Freq. (kHz)	DCR ($\text{m}\Omega$) (at 20°C)		Saturation Current (A)		Temperature Rise Current (A)
			Max.	Typ.	at 20°C	at 105°C	
AXCDR7D28-1R2NC	1.2	100	20.5	16.4	5.90	4.65	4.50
AXCDR7D28-2R0NC	2.0	100	23.8	19	4.55	3.65	3.95
AXCDR7D28-2R7NC	2.7	100	27.5	22	4.10	3.30	3.70
AXCDR7D28-3R6NC	3.6	100	32.5	26	3.55	2.90	3.45
AXCDR7D28-4R6NC	4.6	100	37.5	30	3.30	2.65	3.20
AXCDR7D28-6R8NC	6.8	100	46.3	37	2.90	2.45	2.75
AXCDR7D28-8R0NC	8.0	100	50.0	40	2.60	2.10	2.60
AXCDR7D28-100NC	10	100	53.8	48	2.40	1.95	2.50
AXCDR7D28-150NC	15	100	81.3	65	2.10	1.65	2.00
AXCDR7D28-220NC	22	100	120.0	96	1.65	1.35	1.60
AXCDR7D28-330NC	33	100	196.3	157	1.35	1.10	1.20
AXCDR7D28-470NC	47	100	275.0	220	1.05	0.85	1.00
AXCDR7D28-680NC	68	100	425.0	340	0.90	0.70	0.78
AXCDR7D28-101NC	100	100	655.0	524	0.75	0.60	0.65
AXCDR7D28-151NC	150	100	950.0	760	0.60	0.45	0.52
AXCDR7D28-221NC	220	100	1320	1100	0.50	0.40	0.40
AXCDR7D28-331NC	330	100	2184	1820	0.35	0.30	0.31
AXCDR7D28-471NC	470	100	2652	2210	0.30	0.25	0.28

Dimensions:

Land Pattern:
