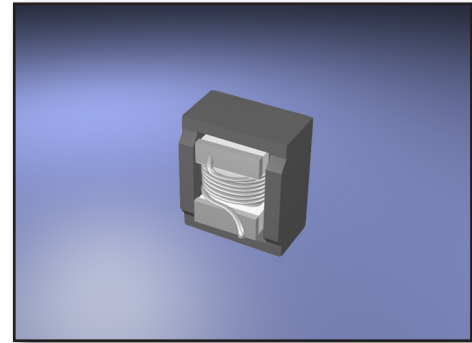


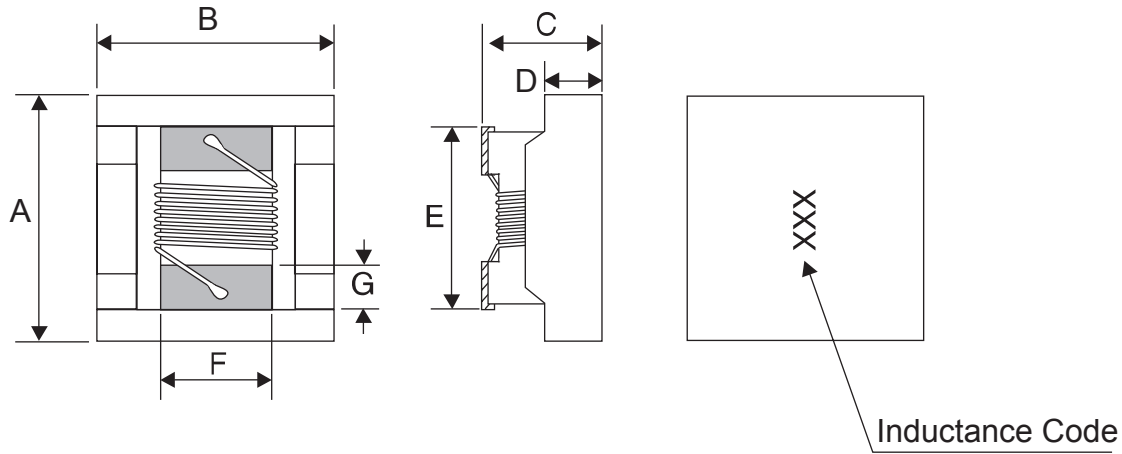
Features :

- SMD shielded wire-wound chip inductor
- Applications: Wireless communications, computer peripherals, audio and video equipment.
- Operating Temperature: -25°C to +105°C (Including self-temperature rise)
- Inductance Tolerance: ±10%, ±20%
- IDC for inductance drop 10% from its value without current.
- Testing Inductance and Q are tested on an HP4284A at specified frequency.
- Packaging: Tape & reel. 750 pcs. per reel.
- Marking: Parts are marked with inductance code.
- Additional info available upon request.



Part Number	Inductance (µH)	L Test Freq. (KHz)	Q Fact. Min.	Q Test Freq. (MHz)	SRF Typ. (MHz)	DCR Max. (Ohm)	IDC Max. (A)
AX1008PS-102_	1.0	100	26	1.0	344	0.05	3.0
AX1008PS-152_	1.5	100	26	1.0	260	0.08	2.8
AX1008PS-182_	1.8	100	28	1.0	225	0.09	2.1
AX1008PS-222_	2.2	100	30	1.0	228	0.14	1.5
AX1008PS-272_	2.7	100	30	1.0	185	0.14	1.5
AX1008PS-392_	3.9	100	30	1.0	172	0.29	1.2
AX1008PS-472_	4.7	100	30	1.0	157	0.35	1.1
AX1008PS-562_	5.6	100	30	1.0	150	0.39	1.1
AX1008PS-682_	6.8	100	30	1.0	110	0.58	0.90
AX1008PS-103_	10	100	30	1.0	95	0.75	0.82
AX1008PS-153_	15	100	30	1.0	75	1.15	0.70
AX1008PS-223_	22	100	33	1.0	30	1.40	0.65
AX1008PS-333_	33	100	33	1.0	21	1.61	0.52
AX1008PS-393_	39	100	33	1.0	18	1.85	0.46
AX1008PS-473_	47	100	33	1.0	15	2.20	0.43
AX1008PS-683_	68	100	33	1.0	12	3.80	0.33
AX1008PS-823_	82	100	33	1.0	10	4.30	0.32
AX1008PS-104_	100	100	33	1.0	8.0	4.80	0.31
AX1008PS-124_	120	100	33	1.0	8.0	5.00	0.25
AX1008PS-154_	150	100	33	1.0	5.8	6.50	0.24
AX1008PS-224_	220	100	33	1.0	5.5	12.0	0.22
AX1008PS-334_	330	100	33	1.0	3.8	17.0	0.20
AX1008PS-474_	470	100	33	1.0	3.1	19.0	0.16
AX1008PS-564_	560	100	33	1.0	2.8	18.4	0.13
AX1008PS-684_	680	100	33	1.0	2.5	24.0	0.12
AX1008PS-824_	820	100	23	1.0	2.0	26.0	0.10
AX1008PS-105_	1000	100	20	1.0	1.5	29.2	0.10

Dimensions :



Size	A Max.	B Max.	C Max.	D	E	F	G
mm	3.81	3.81	2.94	1.78	2.54	2.11	0.51
inches	0.15	0.15	0.11	0.07	0.10	0.08	0.02

Pad Layout :

